



touchfoil™

Lamination and
Controller Installation Guide





Lamination Guide

Permanent

Stage 1

Laminating the touchfoil™ to the substrate

The Permanent adhesive layer is part of the construction of the touchfoil™ and is exposed by removing a protective release layer.

The touchfoil™ can be mounted in any orientation, however the following installation instructions assume the Printed Circuit Board (PCB) will be mounted on the bottom edge.

If mounting the controller at the top of substrate, make sure the controller can be fixed to prevent the possibility of the touchfoil™ peeling away from the substrate.

STEP 1

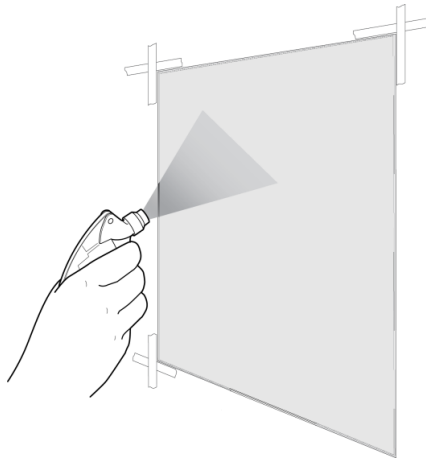
Decide on the correct position of the touchfoil™ before starting the lamination process.

If required, mark on the opposite side of the window the correct position for the touchfoil™.

Empty the 30ml of soap into a water sprayer and add 500ml of water to make a soap/water mix.

Set the water bottle trigger to spray a fine mist before using.

Thoroughly clean the substrate using the soap/water mix and squeegee making sure it is, dust-free and free of any oils or grease just before lamination.



It is recommended to use filtered water - please do not use mineral water

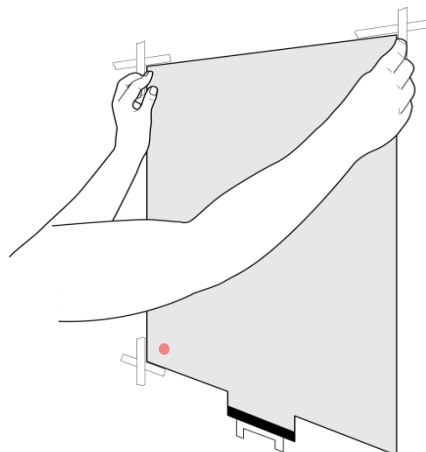
Remove all dirt and other contaminants to ensure a clean lamination to the surface

If chemical cleaners are used, thoroughly clean off the area with the soap/water mix

STEP 2

Remove the touchfoil™ from the packaging on to a clean, soft, scratch free surface. Do not open packaging with a knife and use the tabs provided to release the packaging.

The touchfoil™ must now be cleaned on both sides. To do this first apply a good covering of soap/water mix to the substrate using the water sprayer. Then - with the coloured dot side facing towards the substrate - place the touchfoil™ onto the substrate.

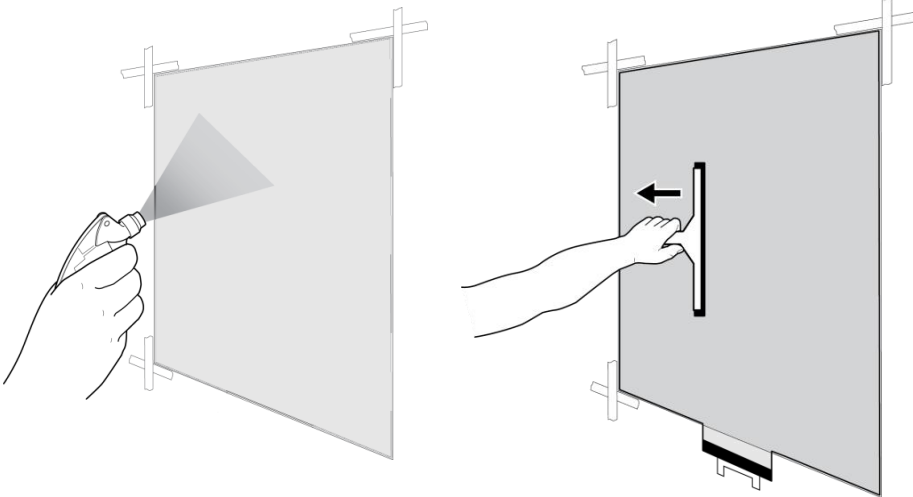


The touchfoil™ must be handled carefully to avoid creasing or tearing

Rippling may occur during delivery; this will completely disappear during the lamination process

Always lay the touchfoil™ on a clean, soft, scratch free surface

Now spray across the back of the touchfoil™ and squeegee to clean off any dust or debris. Use a gentle squeegee action; take care squeegeeing over bubbles as squeegeeing too quickly can cause creasing.



Squeegee from the centre of the touchfoil out towards the edges

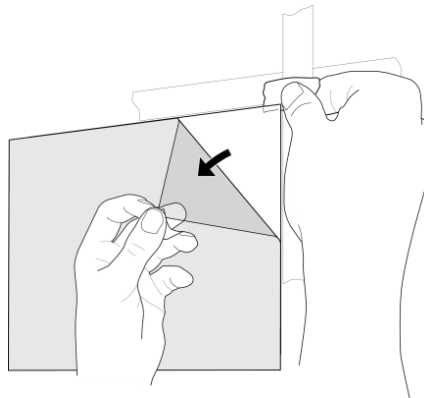
Once cleaned, remove the touchfoil™ completely from the wall and clean off the glass again - to do this re-spray and squeegee.

Now re-spray the substrate and place the touchfoil™ back onto the glass with the red dot side facing towards you. Repeat the cleaning method above for this second side of the touchfoil™.

STEP 3

First, dry one of the top corners to allow the tape to stick to the touchfoil™.

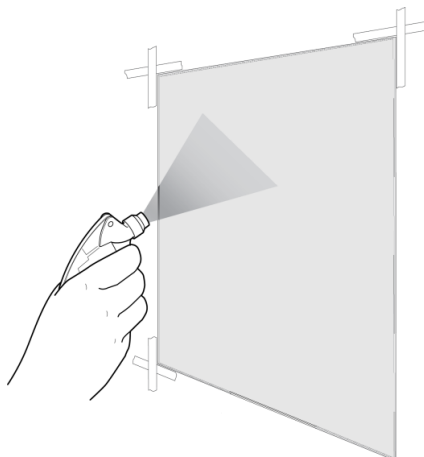
Now, release a small corner of the protective release layer from the touchfoil™ using sticky tape at the back and front corner of the touchfoil™.



To avoid leaving finger prints on the glue of the touchfoil make sure fingers are wet when carrying out these steps.

Remove the release layer by pulling down slowly and at the same time as you pull spray the adhesive surface with the soap/water mix.

It is important to pull back the release layer close to the touchfoil™ and make sure it does not lift off the substrate.



Once the protective release layer has been completely removed, spray the adhesive surface once more making sure you have even coating of the soap/water mix.

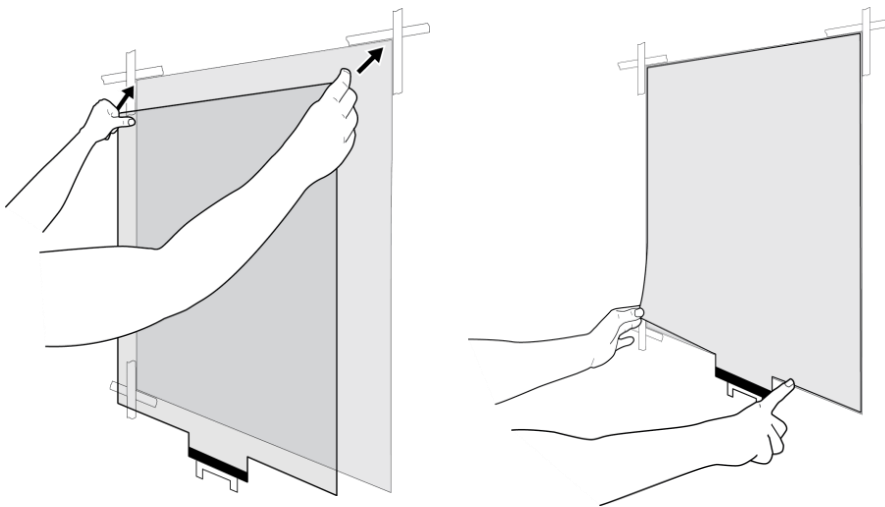
Before removing and turning, wet your fingers with the soap/water mix to avoid sticking to the adhesive surface.

Once the release layer is removed, and the adhesive layer is exposed, make sure you maintain a clean environment as any particles that may stick to the adhesive will visually compromise the final result.

STEP 4

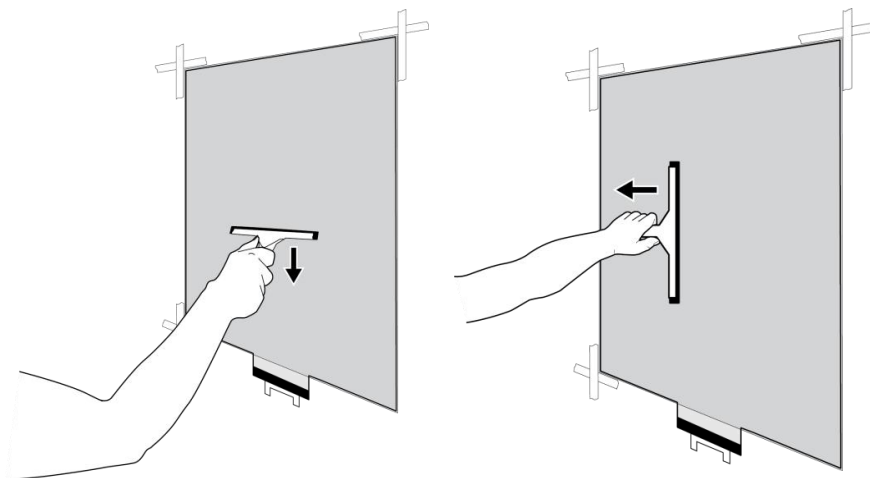
After re-spraying the glass with the soap mix, turn the touchfoil™ around so the adhesive side is now facing the substrate it is being applied to. Offer up the touchfoil™ and slowly allow the water to draw the touchfoil™ onto the substrate.

Two people are required to remove and turn the touchfoil™. This is to keep it as tight as possible so creasing does not occur.



Lightly remove excess water using a squeegee working from the centre to the edges of the touchfoil™.

Squeegee right from the centre, then left from the centre and then up from the centre and down from the centre



Before final lamination, make a visual check that there is no visible dirt under the touchfoil™.

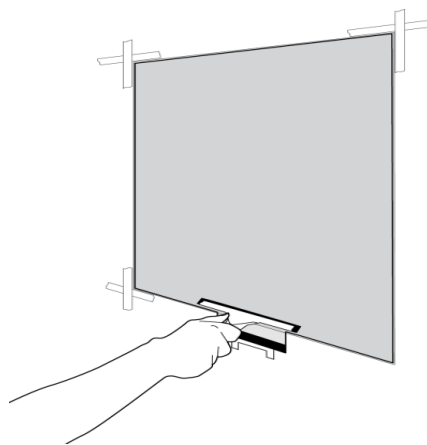
It is vital that you carry out a visual check at this stage in the process as it is the last opportunity to safely remove anything from behind the touchfoil™

Spray the back of the touchfoil™ with the soap/water mix to prevent the squeegee from sticking during lamination.

Repeat the above squeegee process squeegeeing from centre to left, centre to right, centre to top, and centre to bottom through twice. Each time increase the pressure. Repeat squeegeeing if you feel the touchfoil is not fully laminated.

Stop the squeegee 20mm away from the top of the black strip to prevent any damage to the touchfoil™ contacts

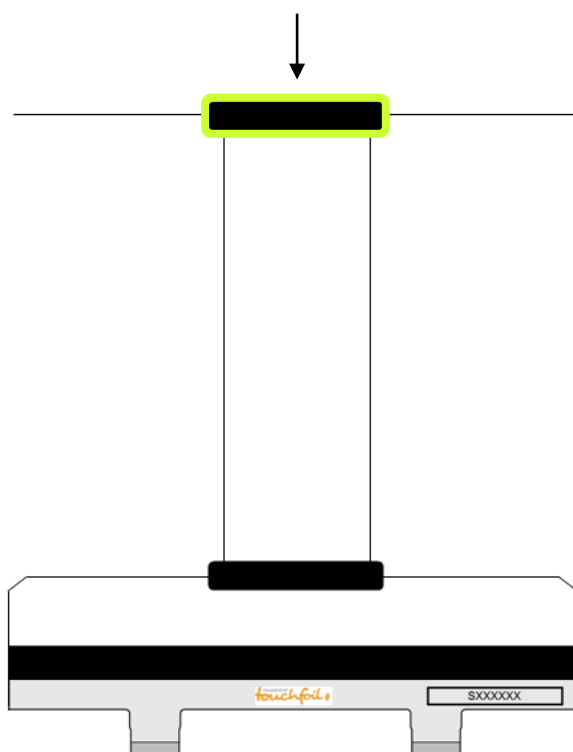
Finally, carefully spray and clean the touchfoil™



Additional Information

THIN TAIL SUPPORT STRIP

A support strip is provided for touchfoils with thin tails to be used if needed at the top of the tail. After concluding the usual process of lamination, the small black strip can be placed between the top of the tail and the substrate the touchfoil™ is attached to. This is to prevent any potential tearing or damage to the touchfoil™ tail, as well as potential de-lamination of the touchfoil™ itself. However, do not apply the support strip if this area needs to be visually clear.





Lamination Guide

Reusable (cling)

Stage 1

Laminating the cling film to the glass

STEP 1

The cling film is applied to the piece of glass followed by the touchfoil™, which will be attached to the back of the cling film.

STEP 2

Thoroughly clean the glass making sure it is free of any dust, oils or grease. Use of a good glass cleaner prior to installation is recommended.

STEP 3

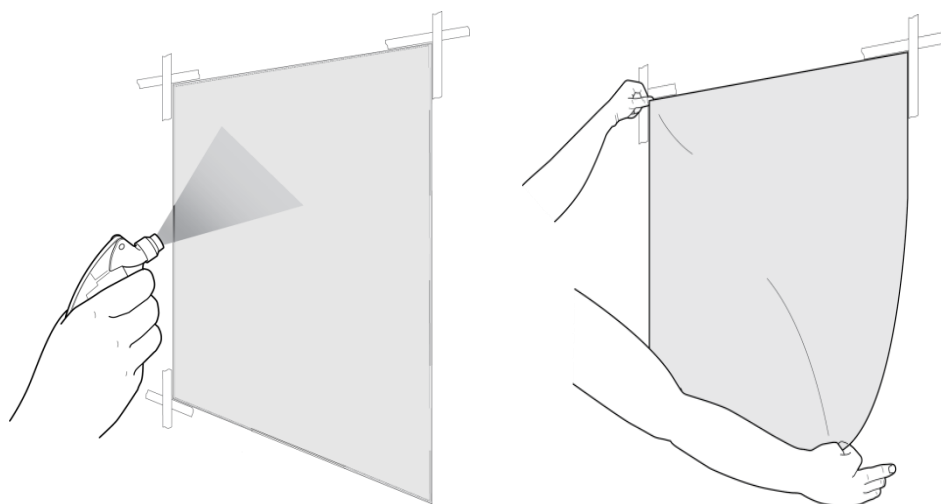
Mark on the opposite side of the window/glass the correct position for the cling film/touchfoil™

Empty the 5ml of soap into the water sprayer and add 500ml of water. Apply a *light* mist of the soap/water mix using the water sprayer to the area of the substrate where the cling film and touchfoil will be applied.

The touchfoil™ must be handled carefully to avoid creasing or tearing

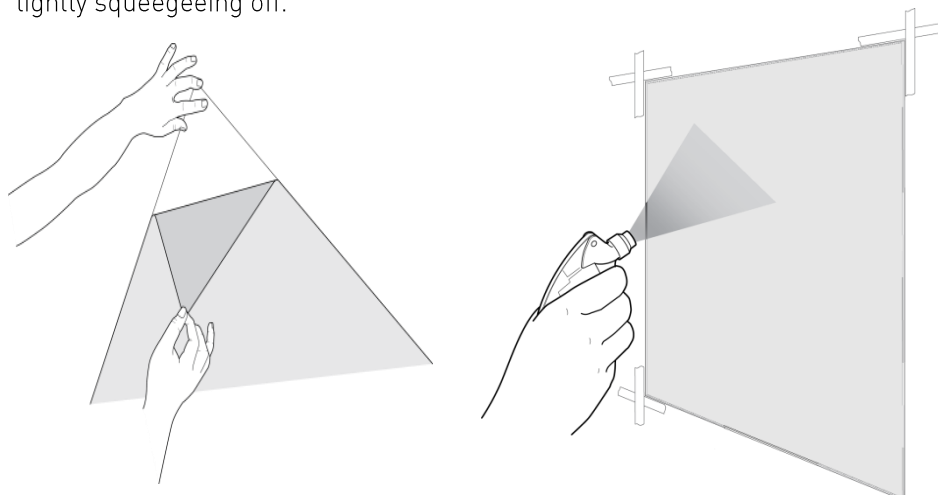
Rippling may occur during delivery; this will completely disappear during the lamination process

Always lay the touchfoil™ on a clean, soft, scratch free surface



Set the spray bottle to a spray a fine mist

Apply the cling film to the substrate and then remove the white backing sheet. Take care not to stretch or crease the cling film. Now clean underneath the backing paper by spraying soapy water across the back and lightly squeegeeing off.



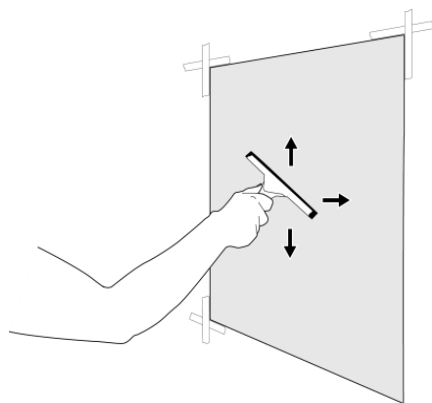
Next, one person should remove the cling film from the substrate whilst the other re-cleans the glass.

The substrate should once again be covered with a layer of the soap/water mix, before placing the cleaned side of the cling on to the clean glass.

To do this, place the top edge of the clean side of the cling film in position and then slowly allow the cling film to draw onto the glass also allowing the water to evenly spread.

Apply a **light** mist, using the water sprayer, onto the back surface of the cling film to stop the squeegee sticking as you laminate.

Starting gently, squeegee the excess water out from under the cling film starting from the centre and moving towards the edges. Slowly increase the squeegee pressure after the majority of the water has been removed



If any large bubbles are trapped it may be necessary to lift the cling film off the surface and re-smooth it from that point rather than trying to force the bubble to the edge, as this may stretch or crease the cling film

Remember to not let the top surface of the cling film dry as you laminate as this may stretch or crease the cling film

Stage 2

Laminating the touchfoil™ to the cling film

STEP 1

The touchfoil™ can be mounted in any orientation, however the following installation instructions assume the Printed Circuit Board (PCB) will be mounted on the bottom edge.

Carefully remove the touchfoil™ from its packaging, keeping the packing roll if you intend to reuse the touchfoil™ at a later point. Un-roll the touchfoil™ and lay on a flat non-abrasive surface.

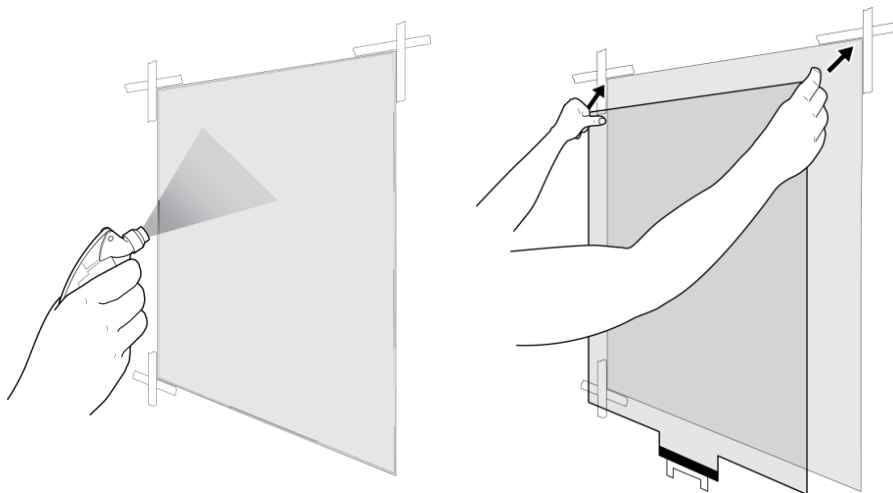
If mounting the controller at the top of substrate, make sure the controller can be fixed to prevent the possibility of the touchfoil™ peeling away from the substrate.

STEP 2

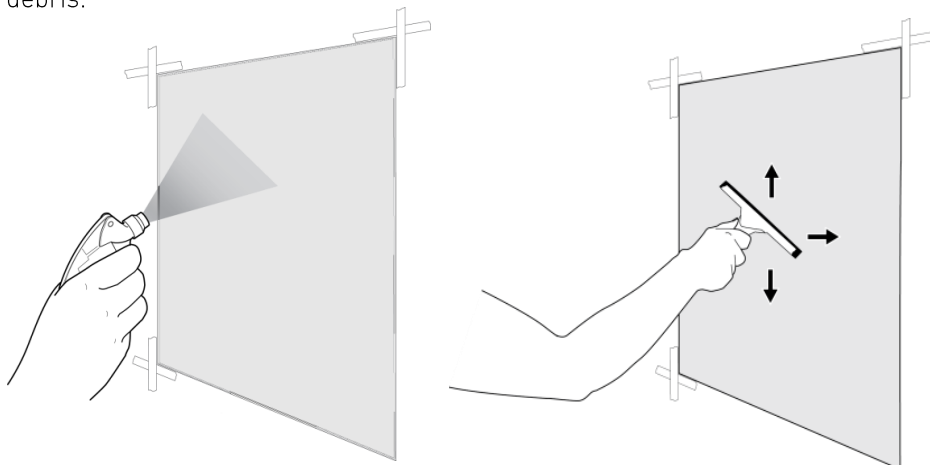
Before applying the touchfoil to the cling the touchfoil must be cleaned.

To do this first apply a **light** mist of soap mixture using a sprayer to the back of the cling film or clear substrate area to use for cleaning.

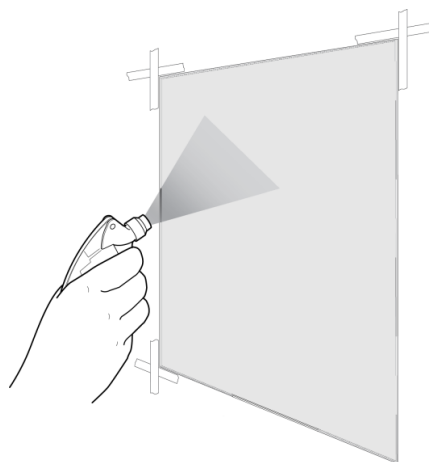
Placing the touchfoil on to the substrate with the contacts of the flexi strip facing the substrate (note this can be done over the top of the cling film if space is an issue).



Now spray over the touchfoil™ and gently squeegee to clean off any dust or debris.

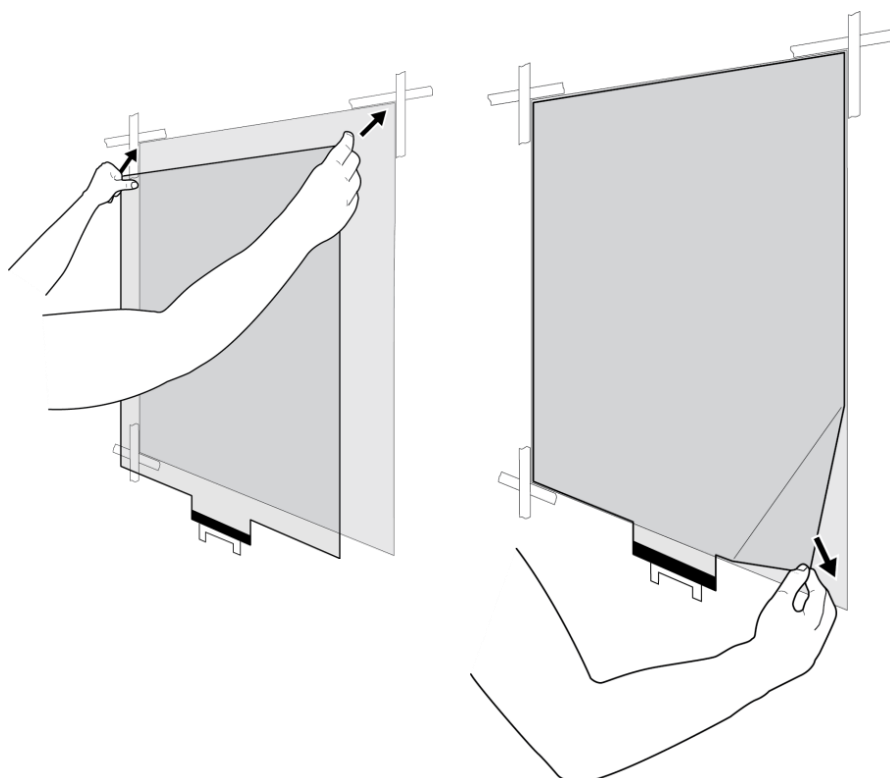


One person should remove the touchfoil completely off the glass and hold it up in the air. Whilst the other person cleans off the glass again and then sprays another layer of soap/water mix across the cling film.



The touchfoil™ can then be placed clean side back on to the cling film.

Carefully align the top edge of the touchfoil™ 5-10mm below the top edge of the cling film, and then slowly allow the touchfoil™ to settle onto the cling film.

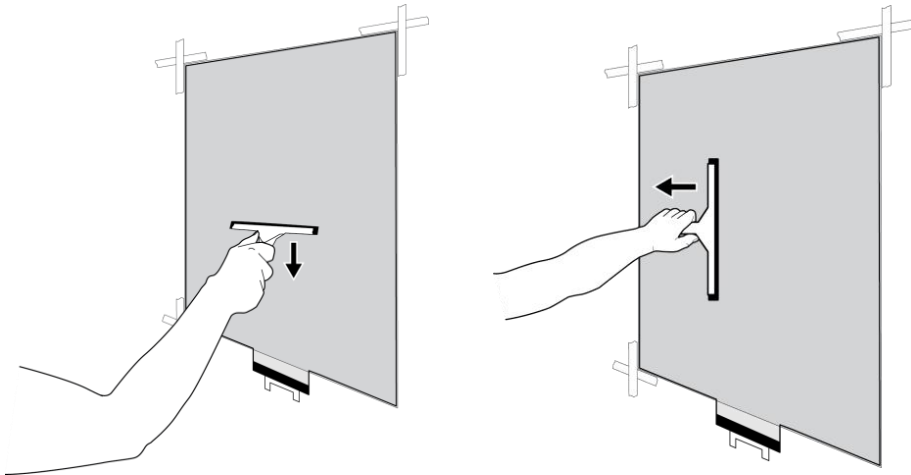


STEP 3

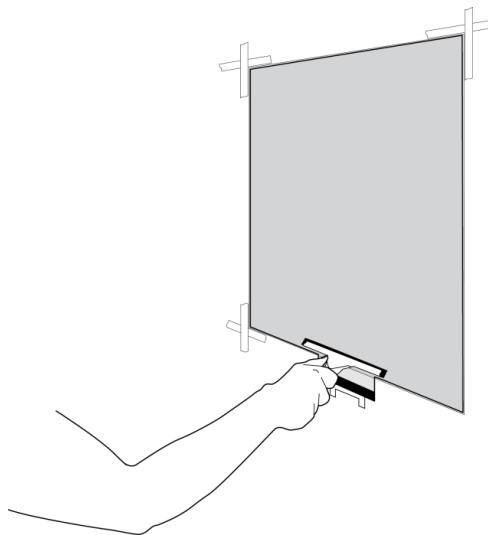
Using the squeegee, work from the centre towards the edges of the touchfoil™, carefully smoothing out any air bubbles that occur during installation

Before final lamination, make a visual check that there is no visible dirt under the touchfoil™

Apply a firm even pressure when laminating



Stop the squeegee 20mm away from the top of the black cover strip to prevent any damage to the touchfoil™ contacts





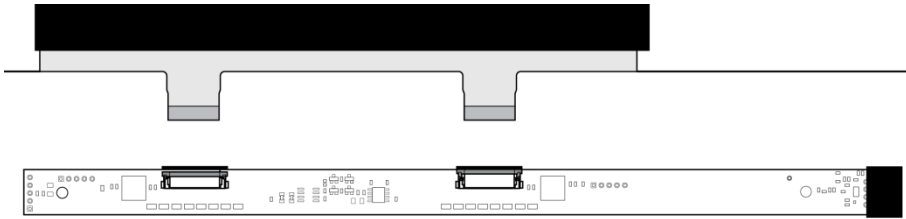
Installation Guide

touchfoil™ controller

STEP 1

Connecting controller to the touchfoil™

This process applies to all visualplanet touchfoil controllers.

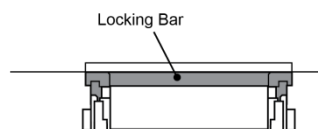
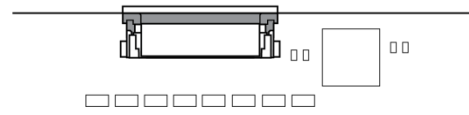
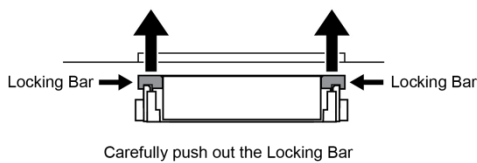
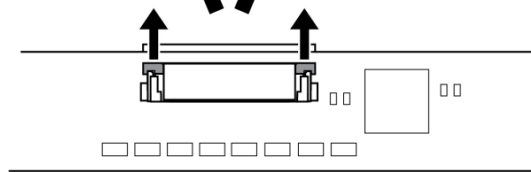
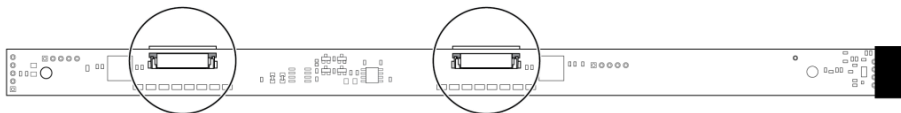


It is best practice to leave the touchfoil to dry for 24 hours before attaching the controller. Where this is not possible please leave for at least an hour.

STEP 2

Unlocking the connectors

Carefully lift the locking bars on both connectors on the controller.



A controller installation video can be seen at:

<https://vimeo.com/touchfoil/portfolios>

The gold contacts must be inserted into the ZIF connectors on the controller board in the correct orientation for the touchfoil™ to function.

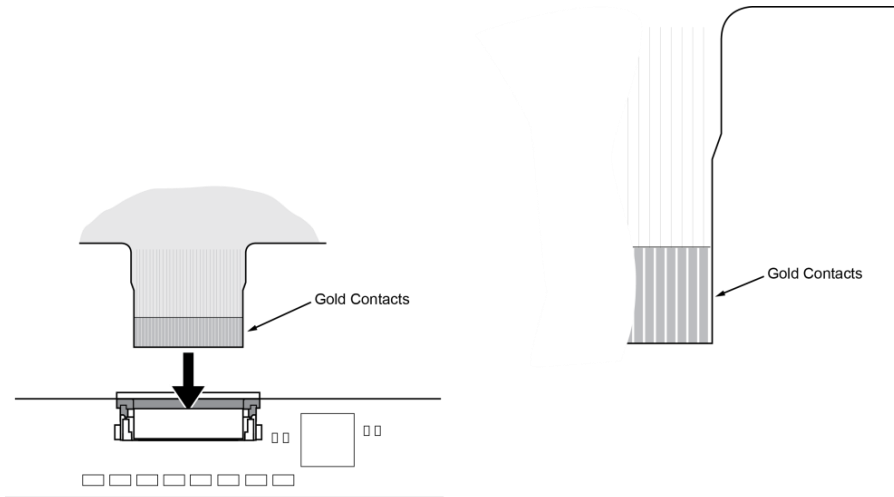
STEP 3

Inserting the touchfoil™ gold contacts into the controller connectors

Gently insert the touchfoil™ gold contacts (in the correct orientation) into the unlocked ZIF connectors on the controller.

The touchfoil™ gold contacts and the component side of the controller must be facing in the same direction otherwise the touchfoil™ will not respond

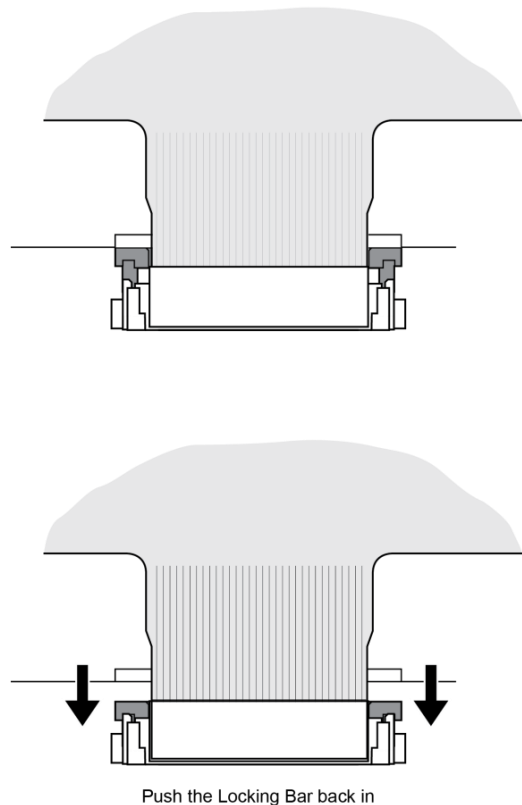
The gold contacts on the touchfoil™ **must** be clean and dry before inserting into the ZIF connectors on the controller



STEP 4

Locking the controller connectors

Push down the locking bar until it becomes locked securely on the gold contacts.

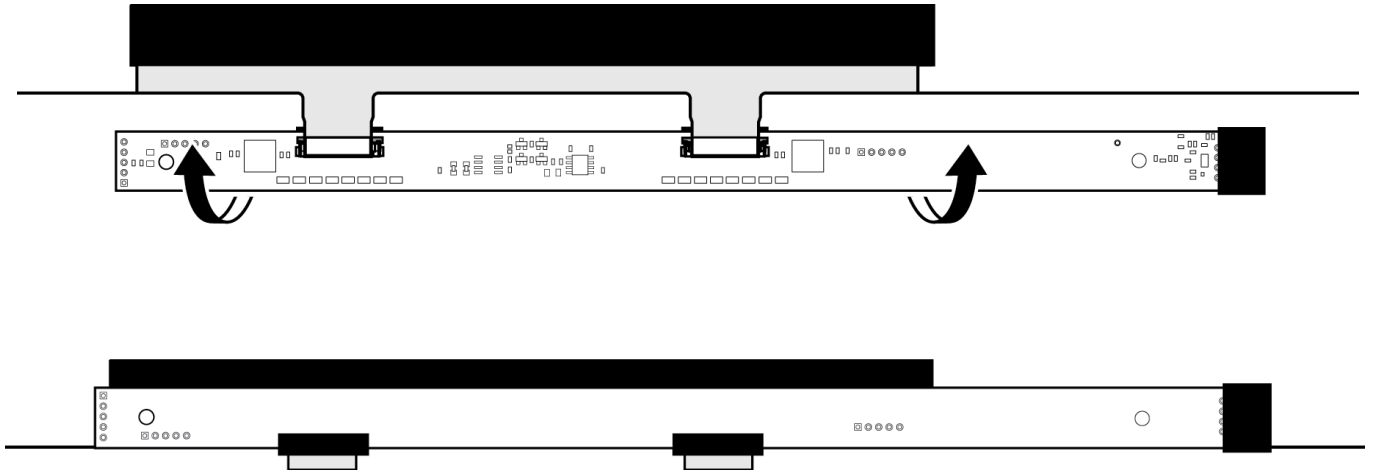


STEP 5

Fixing the controller cover

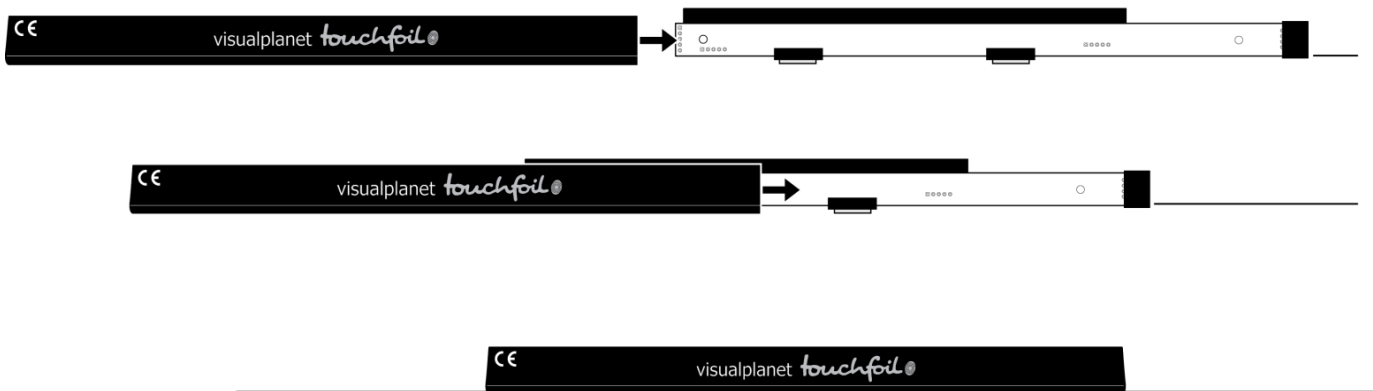
(Please note that for integrated solutions we will not deliver the cover)

Once the electronics are connected to the touchfoil™, fold the board back up on itself towards the tail.



STEP 6

Open the leading edge of the cover to avoid catching on the controller and flexible circuit assembly, and then carefully slide the cover over the controller.



With the controller and flexible circuit assembly safely covered, all the electronic components will now be protected from damage.



There is an adhesive layer at the back of the cover which can be used to securely fix the controller board.

INSTALLATION TIPS

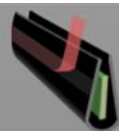
When installing the touchfoil™ with an LCD display an air gap is required between the back of the touchfoil™ and the LCD display. The distance of the air gap is dependent on the size of the LCD display. For example a 40" touchfoil™ requires a 4-6mm gap and a 55" touchfoil™ requires a 6-10mm gap.

The earth lead on the USB cable must be connected to a clean metal point on the LCD metal casing. This will reduce any interference.

Route the touchfoil™ USB cable away from all mains, VGA and power supply cables.

Only move the sensitivity/press threshold levels in small increments if the touchfoil™ is either too sensitive or non-responsive to your touch.

Ensure that the controller PCB is securely fixed



Ensure that the controller PCB is grounded using the black cable



A gap is required between the touchfoil™ and the display panel. Please refer to the user guide



Minimize noise from the display panel by ensuring that the chassis is connected to a reliable ground

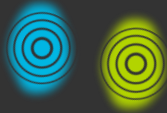


For additional information visit www.visualplanet.biz/support

Support videos can also be seen at <http://vimeo.com/touchfoil/portfolios>



Now enjoy the world of touch



visualplanet™

Camboro Business Park

Oakington Road

Girton

Cambridge

CB3 0QH, UK

+44 (0)1223 202949

www.visualplanet.biz

support@visualplanet.biz