



Single touch driver

Installation and set up



Single touch driver

Just like a traditional mouse, it recognises a single finger touch, drag, pinch and zoom

Installation instructions for

Microsoft Windows

Linux (Ubuntu)

Linux (Other Distributions)

Mac OS X

Set up instructions for all drivers



Single touch driver

Microsoft Windows

WMA9

Stage 1

Installing single touch driver for Microsoft Windows from CD

The single touch driver software is available as a file download

The driver software is also included in the Windows folder within the touchfoil™ driver CD



Supported system platforms:

Windows Vista
Windows 7 (32bit/64bit)
Windows 8.1(32bit/64bit)

STEP 1

Insert the touchfoil™ driver CD into your computer CD drive. If the installation does not start automatically browse to the CD drive, right click the drive name and then do one of the following:

In Windows 7 or Windows Vista, click **Install** or **run the program**

STEP 2

The following menu will appear:



Click on **install touchfoil driver** and follow the on screen instructions

Once you have finished your installation click on **exit** to exit the installation



During install the following message appears. If Java is already installed please select **no** as a reinstall is not required



Stage 2

Set up single touch driver for touchfoil™



Set up **single touch driver** for the touchfoil™ page 21

Installation tips page 25



Single touch driver

Linux (Ubuntu)

└MA9

Stage 1

Installing Ubuntu single touch driver from CD

The single touch driver software is available as a downloadable debian installer file,

The driver software is also included in the Linux/Ubuntu folder within the touchfoil™ driver CD

If installing on Ubuntu 11.4 or above using the Unity interface, please see “Touchfoil™ Driver Installation Tips” section at the end of this document



Supported platforms:
32-bit Ubuntu: 10.04, 11.4, 11.10, 12.04, 13.04, 13.10, 14.04
64-bit Ubuntu: 12.04, 13.04, 13.10, 14.04

STEP 1

Insert CD and copy the **Linux/Ubuntu folder** to a suitable folder on the machine

If you prefer to use the command line, please refer to the section “Terminal Installation” below

Double click on the debian file to open the package in Ubuntu Software Center

STEP 2

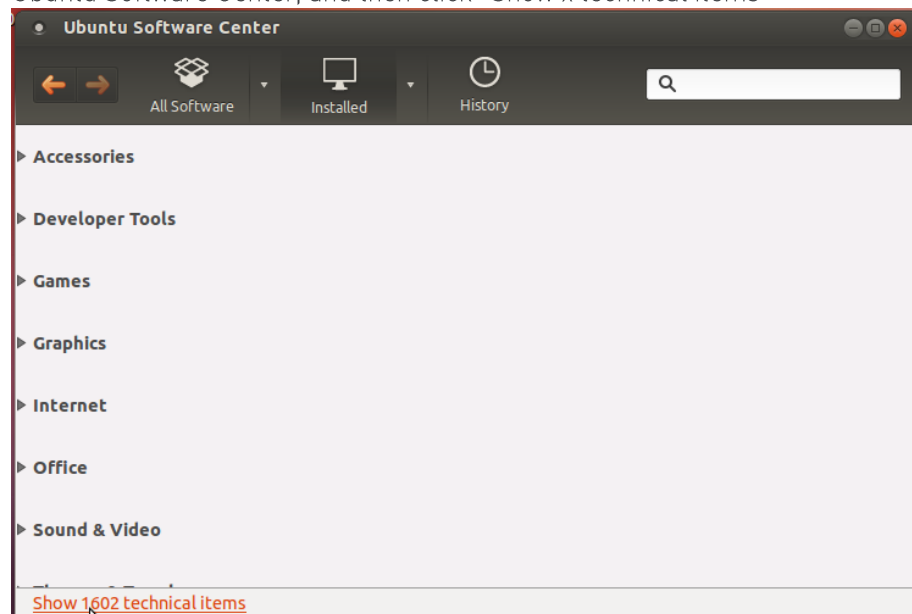
The Ubuntu Software Center will open and display the package information. Click the “Install” button

When the Ubuntu Software Center asks for authentication, please provide your password

Once the installation is complete, the Ubuntu Software Center will show the package as installed

STEP 3

To see the location of the installation, click on the “Installed” button in the Ubuntu Software Center, and then click “Show x technical items”



Then use the search box to search for “touchfoil”

Proceed to “Step 4” below

TERMINAL INSTALLATION

Open a Terminal window (ctrl-alt-t) and navigate to the folder where you saved the touchfoildriver_9.4.1-1_all.deb file:

```
vp@ubuntu:~/$ cd Desktop/
```

Use dpkg to install the debian package:

```
vp@ubuntu:~/Desktop$ sudo dpkg -i touchfoildriver_9.4.1-1_all.deb
```

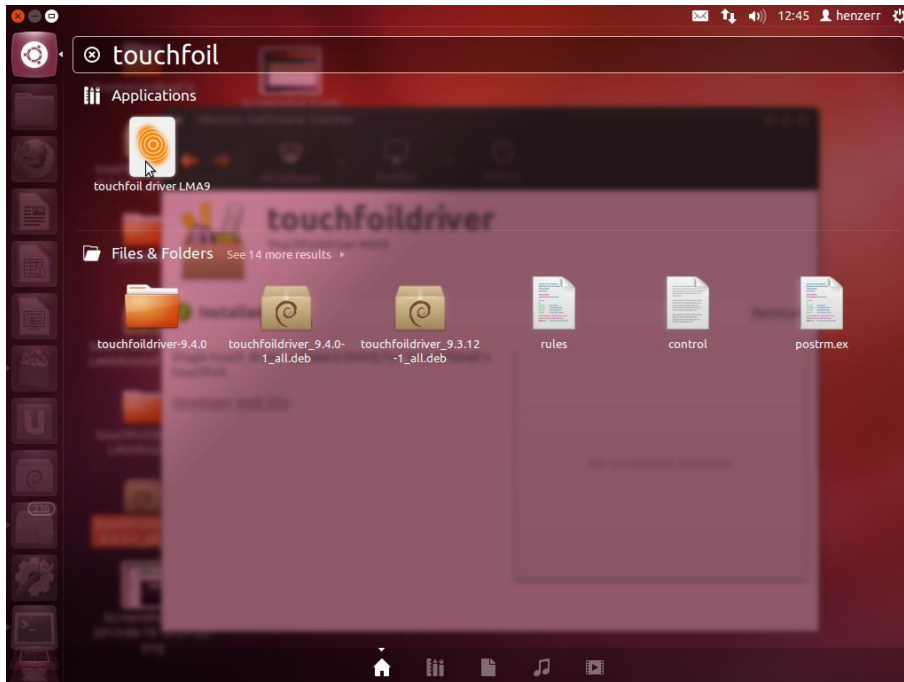
Enter your sudo password when the system asks for authentication. Once the installation is completed, you can verify the install:

```
vp@ubuntu:~/Desktop$ sudo dpkg -l | grep 'touchfoildriver'
```

The driver files will be located in /usr/share/touchfoildriver-MA9

STEP 4

After installation, you can find the driver in the Applications section of the Dash. Search for “touchfoil” in the Dash Home screen:



UNINSTALLATION

To uninstall the single touch driver, find the program in the Ubuntu Software Center by following the instructions in Step 3 above

Click on “touchfoildriver-MA9” then “More Info” or click “Remove” to uninstall. When the system asks for authentication, please enter your password

To uninstall the driver from the terminal:

```
vp@ubuntu:~/Desktop$ sudo dpkg -r touchfoildriver
```

Stage 2

Set up single touch driver for touchfoil

Internet access is mandatory
for this step



Set up single touch driver for the
touchfoil™, page 21

Installation tips, page 25



Single touch driver

Linux (Other Distributions)

LMA9

Stage 1

Installing Linux single touch driver from CD

The single touch driver software is available as a downloadable compressed .tar.gz file

The driver software is also included in the Linux folder within the touchfoil™ driver CD



Supported platforms:
Fedora 20

STEP 1

Insert CD and copy the `touchfoildriver-9.4.1.tar.gz` file in the **Linux** folder to your Desktop or download and save to your Desktop or other location (such as the user's "home" folder)

Open a terminal window and navigate to the file above

STEP 2

Extract the tar.gz file above onto the Desktop, or other location:

```
vp@Fedora2:~/Desktop$ tar -zxvf touchfoildriver-9.4.1.tar.gz
```

You will see 3 items in the resulting touchfoildriver-9.4.1 install directory:

1. The **autostart** directory
2. A **touchfoildriver-LMA9.tar** file
3. The **source** folder

Move the **touchfoildriver-LMA9.tar** file into the **usr/share** directory and extract it:

```
vp@Fedora2:~/Desktop$ sudo mv touchfoildriver-9.4.1/touchfoildriver-LMA9.tar /usr/share/
```

```
vp@Fedora2:~/Desktop/touchfoildriver-9.4.1$ cd /usr/share
```

```
vp@Fedora2:/usr/share$ sudo tar -xvf touchfoildriver-LMA9.tar
```

```
vp@Fedora2:/usr/share$ sudo rm -rf touchfoildriver-LMA9.tar
```

The path to this directory should now be **/usr/share/touchfoildriver-LMA9**

STEP 3

32bit operating systems

Copy the 32lib.tar.gz from the source folder to the usr/lib folder:

```
vp@Fedora2:/usr/share$ cd
```

```
vp@Fedora2:~$ cd Desktop/touchfoildriver-9.4.1/source
```

```
vp@Fedora2:~/Desktop/touchfoildriver-9.4.1/source$ sudo cp 32lib.tar.gz /usr/lib
```

Then copy the jre-7u11-linux-i586.gz from the source folder to the usr/share/touchfoildriver-LMA9 folder:

```
vp@Fedora2:~/Desktop/touchfoildriver-9.4.1/source$ sudo cp jre-7u11-linux-i586.gz /usr/share/touchfoildriver-LMA9
```

Extract the 32lib.tar.gz to usr/lib directory:

```
vp@Fedora2:~/Desktop/touchfoildriver-9.4.1/source$ cd /usr/lib
```

```
vp@Fedora2:/usr/lib$ tar -zxvf 32lib.tar.gz
```

Copy the contents from the usr/lib/lib to usr/lib directory:

```
vp@Fedora2:/usr/lib$ sudo cp lib/libhid.so.0.0.0 /usr/lib
```

Change the file permissions to read & execute and create the symbolic link:

```
vp@Fedora2:/usr/lib$ sudo chmod a+rx /usr/lib/libhid.so.0.0.0
```

```
vp@Fedora2:/usr/lib$ sudo ln -s libhid.so.0.0.0. libhid.so.0
```

Remove the 32lib.tar.gz file and the lib folder:

```
vp@Fedora2:/usr/lib$ sudo rm -rf 32lib.tar.gz lib
```

Go to the usr/share/touchfoildriver-LMA9 directory and extract the jre-7u11-linux-i586.gz file:

```
vp@Fedora2:/usr/lib$ cd /usr/share/touchfoildriver-LMA9
```

```
vp@Fedora2:/usr/share/touchfoildriver-LMA9$ tar -zxvf jre-7u11-linux-i586.gz
```

Remove the jre-7u11-linux-i586.gz file:

```
vp@Fedora2:/usr/share/touchfoildriver-LMA9$ sudo rm -rf jre-7u11-linux-i586.gz
```

64bit operating systems

Copy the 64lib.tar.gz from the source folder to the usr/lib folder:

```
vp@Fedora2:/usr/share$ cd
```

```
vp@Fedora2:~$ cd Desktop/touchfoildriver-9.4.1/source/
```

```
vp@Fedora2:~/Desktop/touchfoildriver-9.4.1/source$ sudo cp 64lib.tar.gz /usr/lib64/
```

Then copy the jre-7u25-linux-x64.tar.gz from the source folder to the usr/share/touchfoildriver-LMA9 folder:

```
vp@Fedora2:~/Desktop/touchfoildriver-9.4.1/source$ sudo cp jre-7u25-linux-x64.tar.gz /usr/share/touchfoildriver-LMA9/
```

Extract the 64bit lib.tar.gz to usr/lib64 directory:

```
vp@Fedora2:~/Desktop/touchfoildriver-9.4.1/source$ cd /usr/lib64
```

```
vp@Fedora2:/usr/lib64$ sudo tar -zxvf 64lib.tar.gz
```

Copy the contents from the `usr/lib64/lib` to `usr/lib64` directory:

```
vp@Fedora2:/usr/lib64$ sudo cp lib/libhid.so.0.0.0 /usr/lib64
```

Change the file permissions to read & execute and create the symbolic link:

```
vp@Fedora2:/usr/lib64$ sudo chmod a+rx libhid.so.0.0.0
```

```
vp@Fedora2:/usr/lib64$ sudo ln -s libhid.so.0.0.0 libhid.so.0
```

Remove the `64lib.tar.gz` file and the `lib` folder:

```
vp@Fedora2:/usr/lib64$ sudo rm -rf 64lib.tar.gz lib
```

Go to the `usr/share/touchfoildriver-LMA9` directory and extract the `jre-7u25-linux-x64.tar.gz` file:

```
vp@Fedora2:/usr/lib64$ cd /usr/share/touchfoildriver-LMA9
```

```
vp@Fedora2:/usr/share/touchfoildriver-LMA9$ sudo tar -zxvf jre-7u25-linux-x64.tar.gz
```

Remove the `jre-7u25-linux-x64.tar.gz` file:

```
vp@Fedora2:/usr/share/touchfoildriver-LMA9$ sudo rm -rf jre-7u25-linux-x64.tar.gz
```

STEP 4

Extract the `lib.tar` file in the `bin` directory:

```
vp@Fedora2:/usr/share/touchfoildriver-LMA9$ cd bin
```

```
vp@Fedora2:/usr/share/touchfoildriver-LMA9/bin$ sudo tar -xvf lib.tar
```

Copy the contents to the `bin` directory:

```
vp@Fedora2:/usr/share/touchfoildriver-LMA9/bin$ sudo cp lib/* ./
```

Remove `lib.tar` and `lib` folder from the `bin` directory:

```
vp@Fedora2:/usr/share/touchfoildriver-LMA9/bin$ sudo rm -rf lib.tar lib
```

Moving the `usb.rules` file

The file `98-libusb.rules` file needs to be moved into place:

```
vp@Fedora2:/usr/share/touchfoildriver-LMA9/bin$ sudo mv ../tools/98-libusb.rules /etc/udev/rules.d
```

Note: This file will override the default behaviour by providing permissions to all users to access any usb device attached to the system.

You should also now set the permissions on this file to read only:

```
vp@Fedora2:/usr/share/touchfoildriver-LMA9/bin$ sudo chmod 0444 /etc/udev/rules.d/98-libusb.rules
```

Creating desktop and menu shortcuts

The desktop shortcut can be copied to the desktop from the `/usr/share/touchfoildriver-LMA9/tools` folder

```
vp@Fedora2:/usr/share/touchfoildriver-LMA9/bin$ sudo cp ../tools/lma9_controller.sh.desktop ~/Desktop
```

```
vp@Fedora2:/usr/share/touchfoildriver-LMA9/bin$ sudo chmod +x ~/Desktop/lma9_controller.sh.desktop
```

The menu shortcut can be copied in the same way:

```
vp@Fedora2:/usr/share/touchfoildriver-LMA9/bin$ sudo cp ../tools/lma9_controller.sh.desktop /usr/share/applications
```

```
vp@Fedora2:/usr/share/touchfoildriver-LMA9/bin$ sudo chmod +x  
/usr/share/applications/lma9_controller.sh.desktop
```

STEP 5

To run the software, you can invoke the `lma9_controller.sh` script (you may need to run as root user or `sudo`)

```
vp@Fedora2:/usr/share/touchfoildriver-LMA9/bin$ ../lma9_controller.sh
```

Stage 2

Set up single touch driver for touchfoil



Set up **single touch driver** for the touchfoil, page 21

Installation tips, page 25



Single touch driver

Mac OS X

MMA9

Stage 1

Installing Mac OS X single touch driver from CD

The single touch driver software is available as a downloadable package

The driver software is also included in the Mac folder within the touchfoil™ driver CD



System platforms:
Leopard
Snow Leopard
Lion
Mountain Lion
Mavericks

STEP 1

Insert DVD and copy **Mac OS X folder** to your desktop or download and save to your desktop

The application is delivered as a standard **Apple Mac Package** touchfoildriver-MMA9.mpkg



STEP 2

Open the package and the following Menu will appear

Follow the onscreen instructions, which will take you through the following steps:

Introduction

Readme

License agreement

Please accept Destination **Do Not Change** Installation from default **/Applications/touchfoildriver-MMA9**

Installation

Requires **root** privileges - type your own password
Installs single touch driver and desktop short cut

Summary

Install complete, single touch driver will automatically start



STEP 4

Instructions on how to auto start single touch driver on user login

Navigate to system preferences

Open user accounts

Open the **Login Items** and click the + sign at GUI bottom left corner

Navigate to **/Applications/touchfoildriver-MMA9/MMA9DrvLaunch** and click **Add**

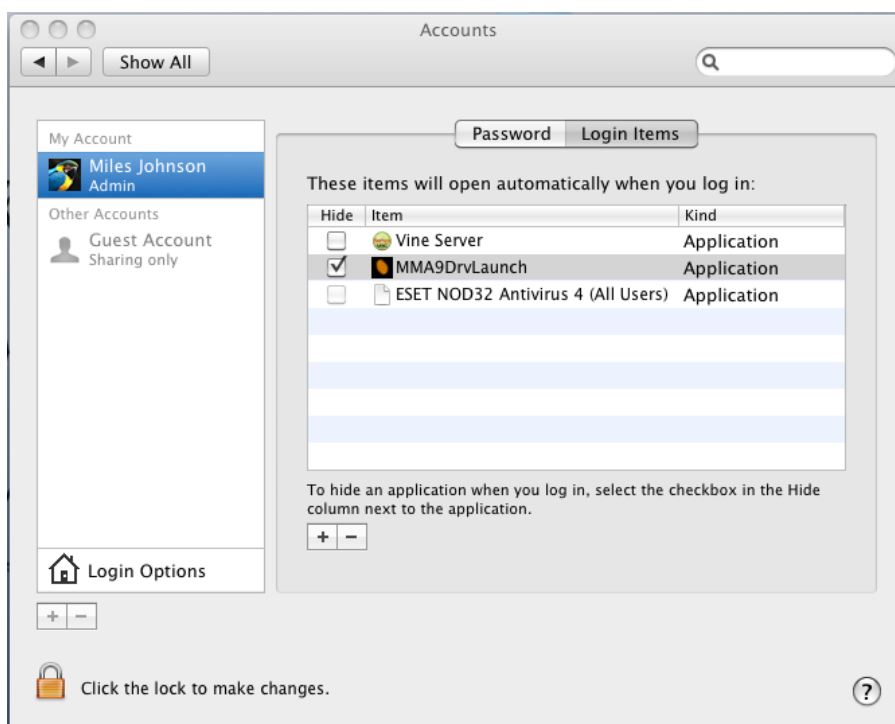
This will add the MMA9DrvLaunch program to the user's login procedure to launch the single touch driver automatically



STEP 5

The following will appear in the user's **Login Items**. Check the "Hide" checkbox to launch the driver in the background.

Now Re-boot and the single touch driver will start on user's login



Stage 2

Set up single touch driver for touchfoil



Set up single touch driver for the touchfoil™, page 21

Installation tips, page 25



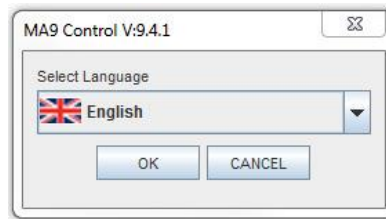
Set up

Single touch driver

STEP 1

Language Selection

If you selected automatic start up on installation you will be presented with a drop down menu, to select the language of single touch driver, if not then click on the **touchfoil driver-MA9** desktop shortcut to start the driver



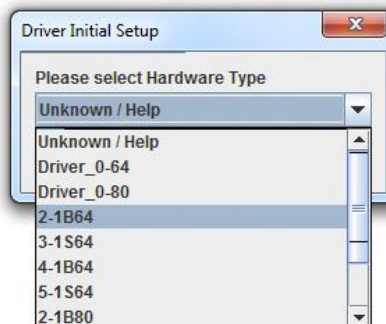
It is possible to customise for additional languages, please contact your supplier for details

STEP 2

Driver Selection

Select the correct driver from the drop down menu

If you accidentally select the incorrect driver click the **factory reset button** (systems tab) and restart the setup process

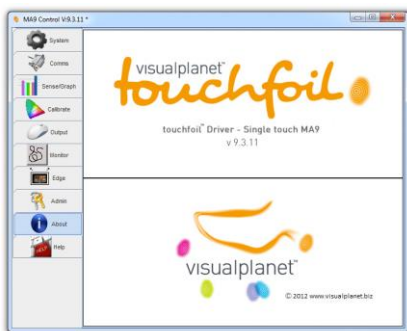


It is vital at this point to select the correct driver for your touchfoil™

STEP 3

Single touch driver user interface

Windows/Linux



MacOS X

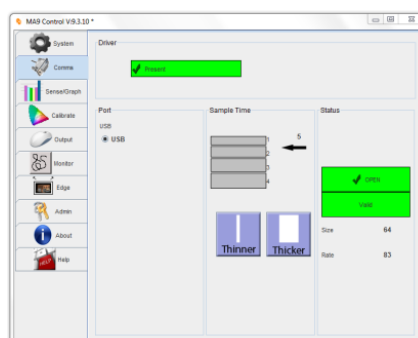


STEP 4

Communications

Check the touchfoil™ is communicating, click on **Comms** tab

Check driver present, **open** and **valid** boxes are green



STEP 5

Calibrate

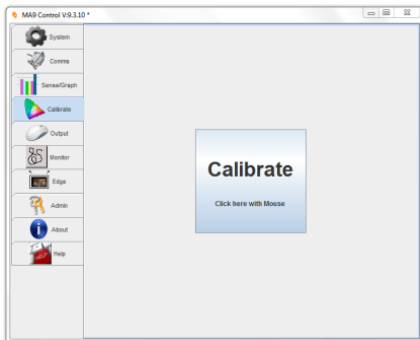
Click on **calibrate** tab

Click with the mouse the **Calibrate** box to begin calibration process

Touch each **target** in turn, with your finger, as they appear

If the system will not calibrate go to step 8 and adjust the sensitivity of the touchfoil™

Note: For Ubuntu 11.4 and above please refer to Page 25 before calibration



STEP 6

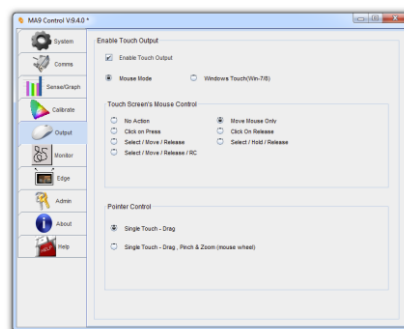
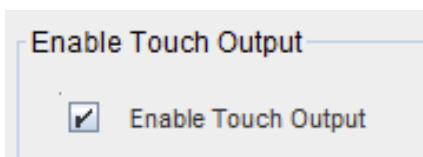
Touch control

Click on the **output** tab

Click **Enable Touch Output**

Select the touch control you require. If you are running Windows 7 or above, you will be able to select **Windows Touch (Win-7/8)**

Click on **enable selected control** tick box to enable touch control otherwise your touchfoil™ will not register a touch



STEP 7

Close Driver and **Save** configuration as instructed



The following steps 8 and 9 are only required if the touchfoil™ is too sensitive, not responding, or the thickness of your material is above 12mm

STEP 8

Sense/Graph Tab

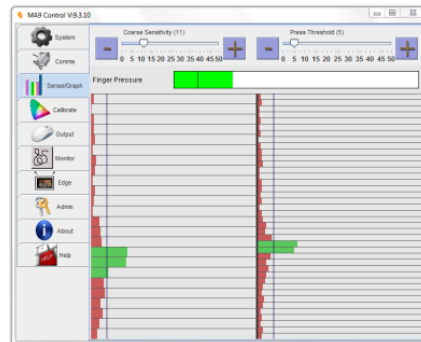
Adjust sensitivity and finger pressure levels in small increments only

Used to set up touch sensitivity and monitor wire indicator movement

Our default setting will allow you to work through 4-12mm of material

If the touch is too sensitive or insensitive adjust in **SMALL** increments the sensitivity and finger pressure controls to achieve the required result

A touch is achieved when the green bar exceeds the finger pressure bar indicator (black line)



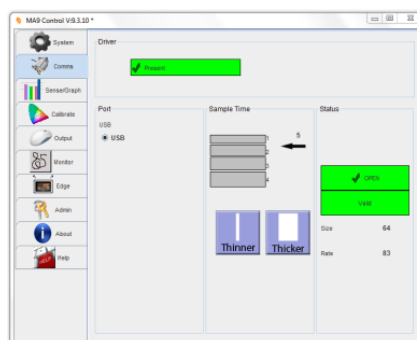
STEP 9

Comms Tab

Displays driver status

Allows adjustment of sample time if required, which sets the driver for different thicknesses of material

The default sample time of 5 is suitable for 4-12mm of material, 10 is suitable for 12-15mm, 15 is suitable for 15-25mm



It is important to leave the default sample time setting of 5 unless your material is thicker than 12mm

TOUCHFOIL™ INSTALLATION TIPS

When installing the touchfoil™ with an LCD display an air gap is required between the back of the touchfoil™ and the LCD display. The distance of the air gap is dependent on the size of the LCD display. For example, a 40" touchfoil™ requires a 6-8mm gap and a 55" touchfoil™ requires a 8-10mm gap

The earth lead on the USB cable must be connected to a clean metal point on the LCD metal casing. This will reduce the interference that is caused by the LCD unit

Route the touchfoil™ USB cable away from all mains, VGA and power supply cables

Only move the sensitivity/press threshold levels in small increments if the touchfoil™ is either too sensitive or non-responsive to your touch

During the driver install process a **shortcut** of the single touch driver is placed in the **startup** folder, this enables the single touch driver to automatically start on system boot up.

If you do not require the driver to auto start, remove the driver **shortcut** from the **startup** folder

TOUCHFOIL™ DRIVER INSTALLATION TIPS

Ubuntu 11.4 and above using Unity Interface – driver installation preparation

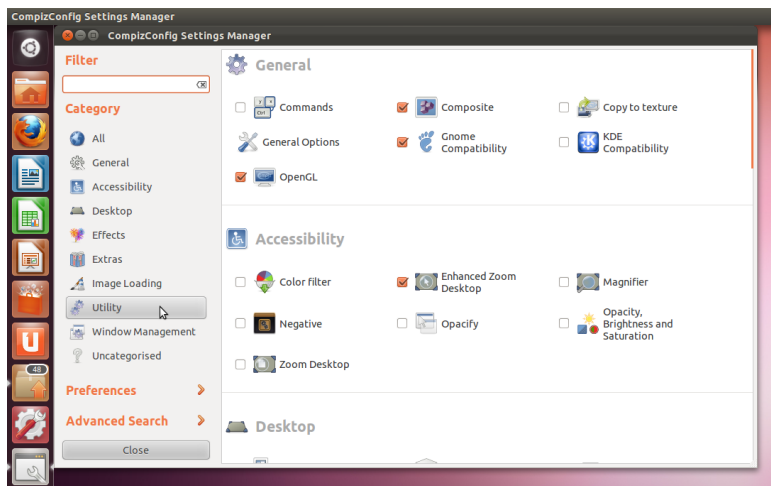
The introduction of Ubuntu 11.4 brings a new User Interface called Unity, which is built on top of the Gnome desktop environment. Unfortunately, there are bugs in the Interface for applications that need to run in a full screen mode. The LMA9 driver uses full screen mode to run the calibration utility however in Unity the task bar will not disappear, and so the correct calibration of the touchfoil™ is not possible. To work around this Unity bug, you will need to install "Compiz Config Settings Manager" and enable "Legacy Fullscreen Support". To do this:

1. Install the Settings Manager:

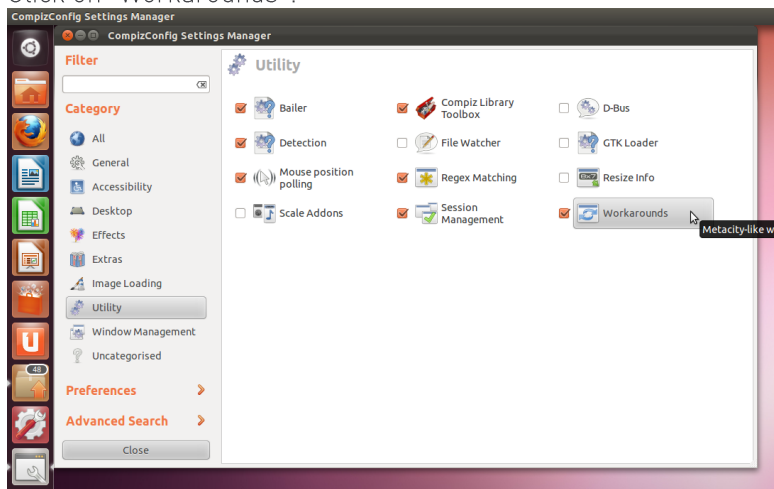
```
dan@ubuntu:~$ sudo apt-get install compizconfig-settings-manager
```

2. Open the Settings Manager by clicking its icon in the launcher dash panel
3. Navigate to "Utility":

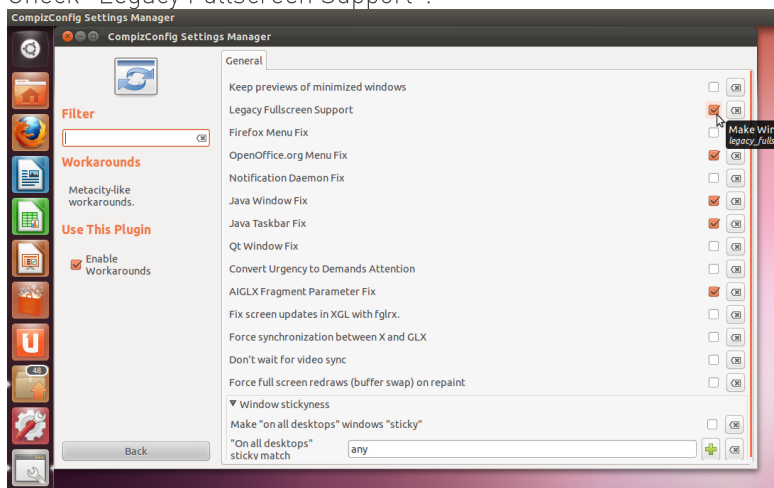
Instructions for other Linux distributions can be found on page 11



4. Click on “Workarounds”:



5. Check “Legacy Fullscreen Support”:



6. Close the Settings Manager and check that LMA9 will now calibrate successfully in full screen mode

Unable to calibrate

Check you have installed the correct driver touchfoil™ not sensitive enough. Try using two fingers to touch the targets or slightly increase the sensitivity, once calibrated review sensitivity settings

Graph moving but not responding to a touch

Make sure you have connected the controller board the correct way around

Increase sensitivity, or reduce press threshold level or both

Random touches

touchfoil™ too sensitive - reduce sensitivity level

External interference – remove external interference if possible,
Connect USB earth cable to a clean earth point

Check there are no other instances of any other touch drivers running

For more information please go to support.visualplanet.biz

Now enjoy the world of touch



t +44 (0)1223 202 949

w www.visualplanet.biz

Visualplanet, Camboro Business Park, Oakington Road, Girton, Cambridge, CB3 0QH UK

Manufacturers of **touchfoil** 