

# Touch Driver User's Guide

December 2006

Digitech Systems co., Ltd  
[www.digitechsys.co.kr](http://www.digitechsys.co.kr)  
Copyright 2006

**Information in this document is subjects to change without notice and does not represent a commitment on the part of Digitech Systems co., Ltd. No reproduction or translation of any part of this guide by any means may be obtained, without prior written permission from Digitech Systems co., Ltd. Request for permission and inquiries for further information should be e-mailed to [mail@digitechsys.co.kr](mailto:mail@digitechsys.co.kr).**

**You are welcome to visit us at the address <http://www.digitechsys.co.kr> .**

**Copyright 2006 Digitech Systems co., Ltd.  
All Rights Reserved**

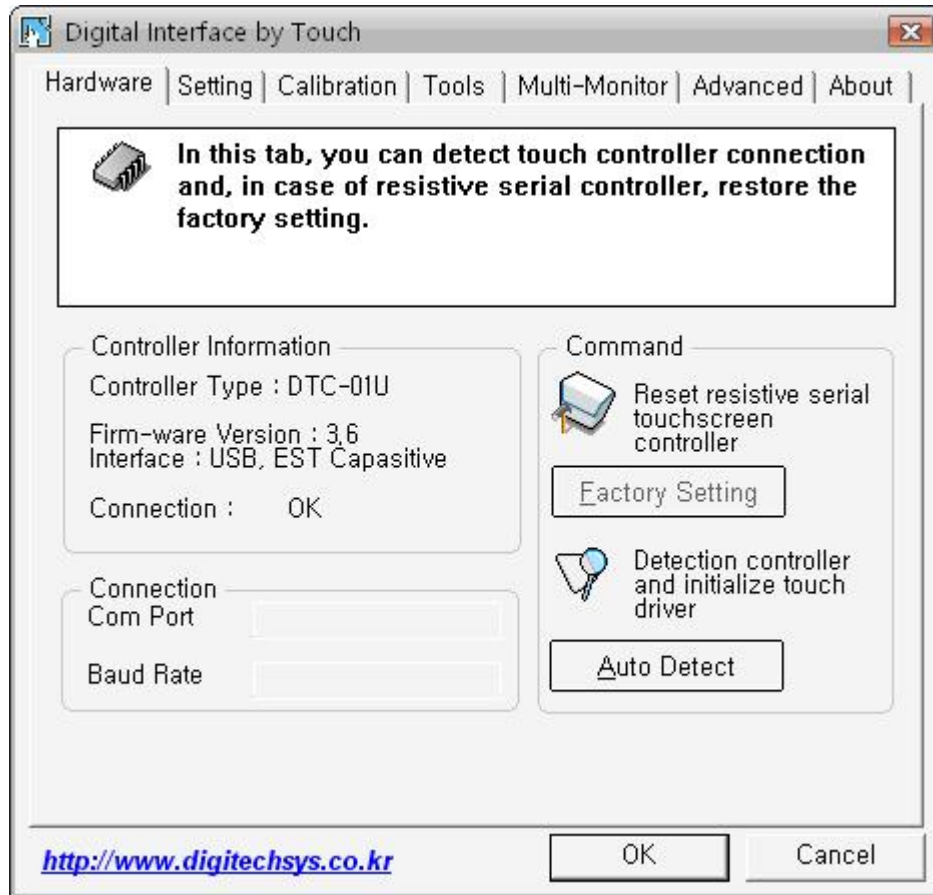
## **Introduction**

Touch screen can be the simplest way to apply in entertainment, amusement, gaming, POS, and PDA. The interface should be durable, reliable, precise and stable. The users do not have to know a lot about technical knowledge, but simply need to know how to point what they want directly.

Digitech Systems Co., Ltd. has been operating as a professional support solutions provider with experienced manpower in fast growing Touch Screen market since establishment in September 6<sup>th</sup>, 2000. Digitech Systems is the major touch screen manufacturer in Korea as well as in the world who provides the best input device solution to the end users. We are young but with more than 10 years of experience for developing and manufacturing Touch Screen.

Digitech Systems started the mass production for resistive Touch Screen for various business application market as well as consumer device market such as PDA, HPC, and mobile communicator, in order to be the leading supplier of touch screen in Korea as well as world class touch screen in terms of both quality and quantity.

## 1. Hardware Tab



### Factory Setting

- Used to restore the factory setting of the serial controller's firm-ware

### Auto Detect

- Used to detect touch controller. If more than one controller is connected, it displays information of the controller, whichever is detected first.

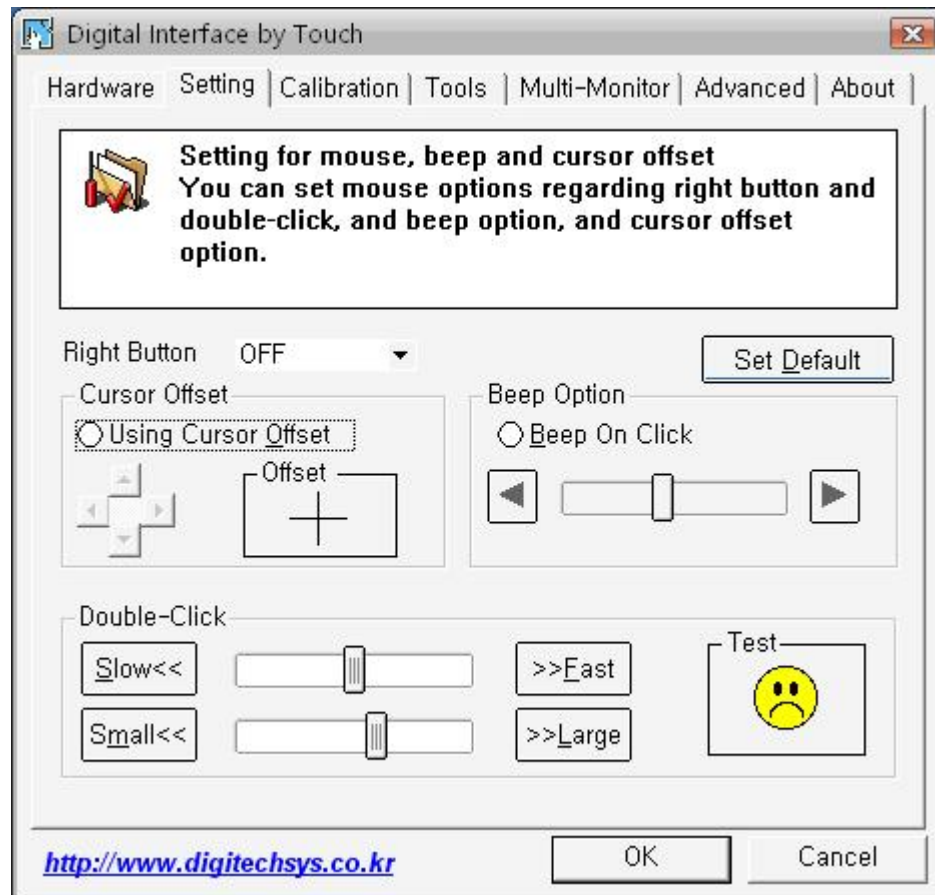
### Controller Information

- Controller Type : the type of the detected controller
- Firm-ware Version : the version of the controller's firm-ware
- Connection : indication of whether the controller is connected properly

### Connection

- Com Port : the current port number for the controller such as COM1 and COM2
- Baud Rate : the controller's current Baud rate

## 2. Setting Tab



### Right Button:

- An option to enable mouse right button

### Cursor Offset:

- An offset between a position where an actual touching on the touchpad is made and a position at which a user wants the system to recognize the touch

### Beep Option:

- An option to generate beep whenever touchscreen is clicked

### Double Click:

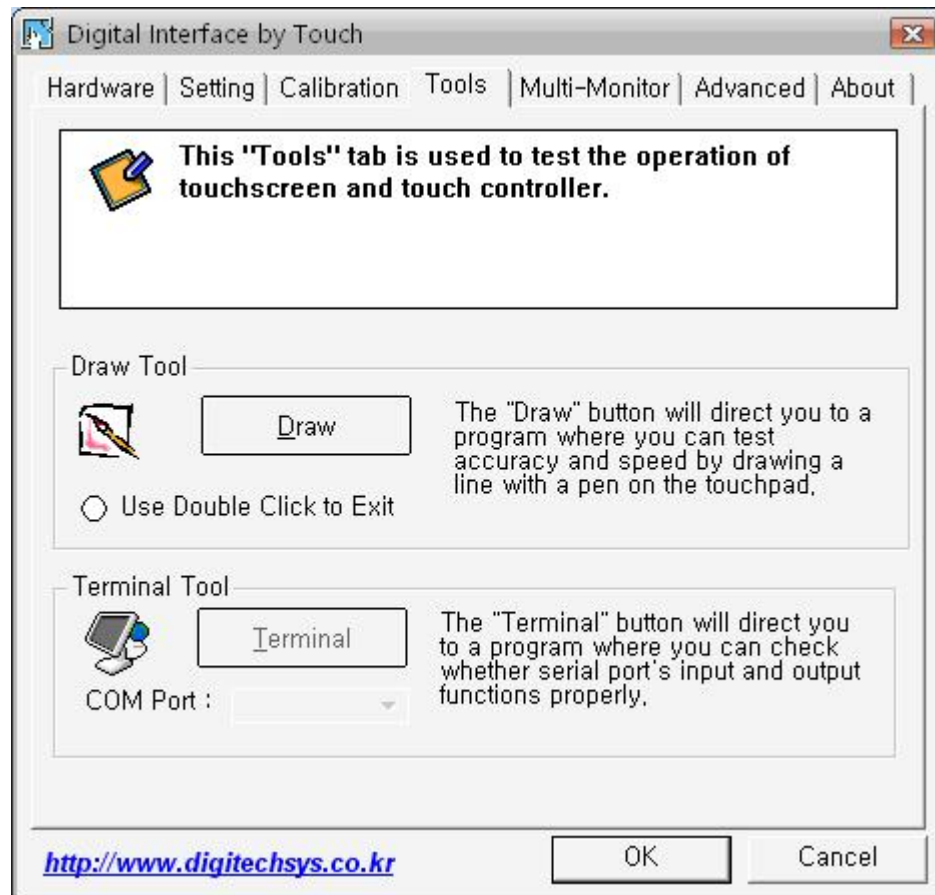
- An option to specify the size of rectangle and speed in/at which the touchscreen recognizes the two successive clicks as double-click.

### 3. Calibration Tab



Please Note that the calibration type depends on its controller type. 2 Point calibrate is for 4 wire touchscreen; 5 point calibrate for 5 wire touchscreen; and 9 point calibrate for EST capacitive touchscreen.

## 4. Tools Tab



**Draw Tool** – Used to test its accuracy and speed, for example, by drawing a line with a pen on the touchpad

**Terminal Tool** – Used to check the reception of data from the controller.

## 5. Multi-Monitor Tab



### Using Multi-Monitor

- Used to support the multiple controllers for multiple monitors

### Select Display

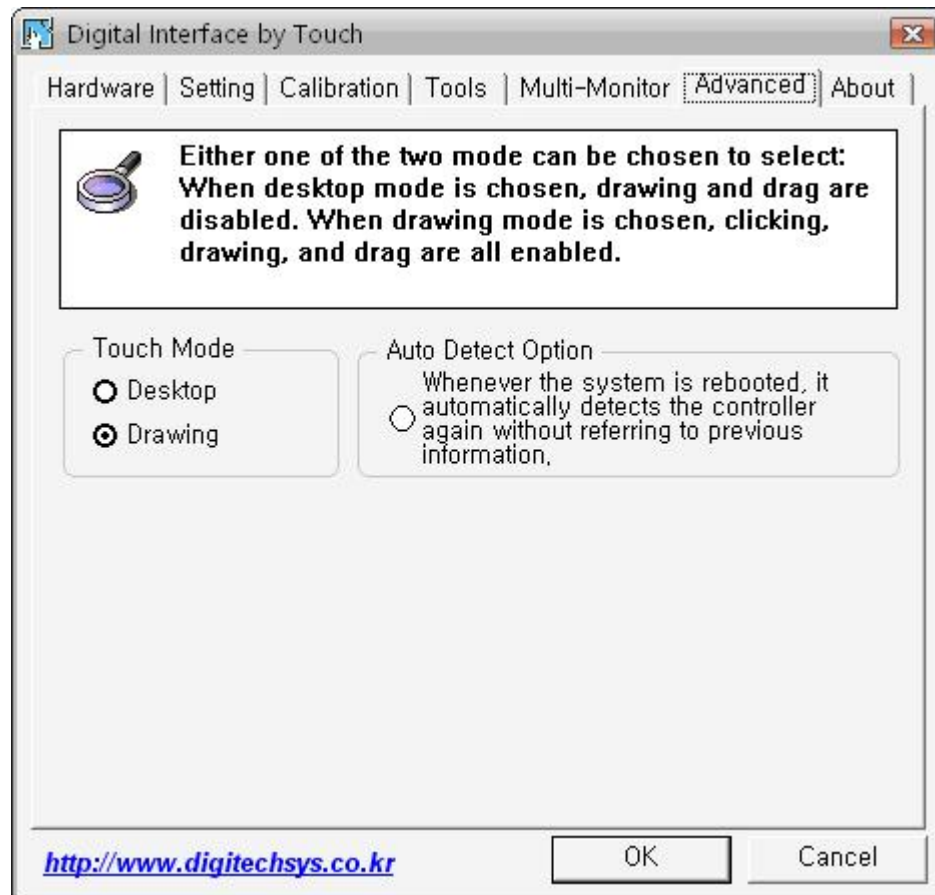
- Used to associate each monitor with its controller

### Calibration Controller

- Used to choose and to calibrate a particular controller



## 6. Advanced Tab



### Touch Mode

- Desktop Mode – Only clicking is enabled.
- Drawing Mode – In addition to clicking, Drawing and Drag are supported.

### Auto Detect Option

- If the system is rebooted, it automatically detects the controller all over again without referring to previous information.